

## Stop searching, start discovering

Are you frustrated with searching for terms in large data sets? Do you spend a significant amount of time building complex queries that don't find what you're looking for? **ID | konzept**<sup>TM</sup> can help.

ID | konzept works on the premise that your team is searching for information related to a particular term, rather than just trying to find the occurrence of that term across thousands of documents. By enabling users to visually choose the concepts that surround a central term, ID | konzept discovers and returns results that are highly relevant—dramatically reducing the time spent in search.

## Discovery that works across any data store

ID | konzept can be applied to a variety of unstructured content, including email stores, documents (e.g., PFD, Word, PPT), web sites and any other type of unstructured text. It can also examine files stored on a single desktop device or scale with ease across SharePoint sites.

## Turn data into actionable intelligence

While data is usually collected in a raw format, such as e-mail or PDF documents, what organizations really need to succeed is actionable intelligence. ID | konzept powers the transformation of data into knowledge across an enterprise.

## Benefits

### Improve productivity –

ID | konzept saves time and effort by providing visual pre and post search filtering.

### Discover what you're

**looking for fast** – eliminate multiple searches and sifting through pages of irrelevant results.

### Have a holistic view of

**data** – apply concept-aided discovery across email files, attachments, or any type of unstructured document.

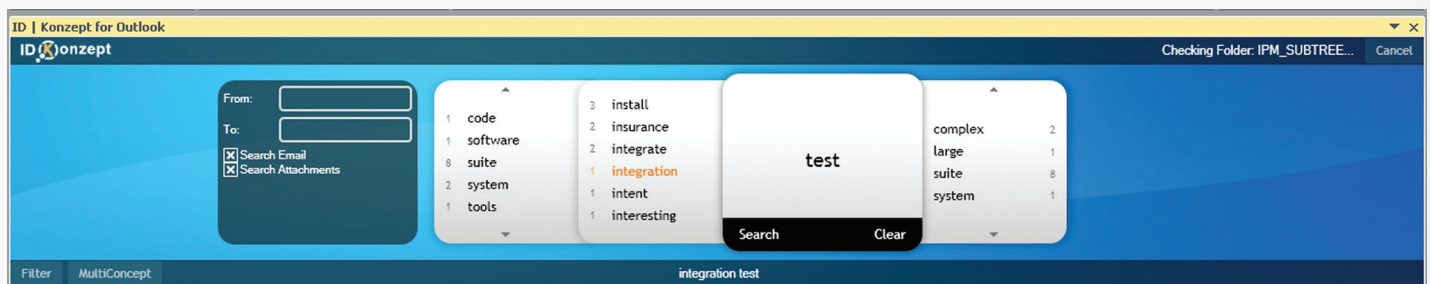
### Improve reporting accuracy

– see all the concepts in all data sets to ensure that you've captured all information needed.

### Enhance existing

**organizational processes** – use ID | konzept by itself or as part of your existing enterprise wide processes.

*Concept builder implemented for Microsoft® Outlook.*



## Features

ID | konzept's intelligent pre and post search capabilities help your team discover key information efficiently:

**Build Concepts** – return highly relevant results by choosing 1-5 concepts that apply before or after your key search term.

**Filter Metadata** – narrow your results down even further by applying pre search filters, such as choosing whether or not to search email attachments.

**Create / Manage Searches** – setup searches that work well and save them for later use, or have notifications sent to you.

**Save Documents** – save documents you find and think will be useful for later viewing.

**Index File Contents** – concept indexes are created from web site content, documents, and raw text.

**Integrate Easily** – services based architecture makes it easy to integrate discovery into your enterprise wide processes.

### Powered by the Intelligent Discovery Engine<sup>TM</sup>

A groundbreaking platform built on patent-pending technologies. The engine ingests and normalizes disparate data sources and creates a data structure that facilitates powerful pattern matching and relationship discovery. This service-enabled platform is extensible through various plug-in modules and an open API (based on RESTful web services) that ensure interoperability in a variety of enterprise environments.

### About Applied Technical Systems

Applied Technical Systems Inc. (ATS) is an innovative technology company with expertise in data analysis. Since 1980 ATS has helped government agencies and commercial clients arrive at better decisions through intelligent discovery solutions, total life cycle expertise for Naval operations, and a broad range of information engineering services. ATS' clients include the U.S. Intelligence Community, Department of Homeland Security, Department of Defense and the Washington State Government. Headquartered in Silverdale, Washington, ATS has offices in Washington D.C. and Virginia.

| Selected Feature       | Outlook | Desktop | Enterprise |
|------------------------|---------|---------|------------|
| Build Concepts         | ✓       | ✓       | ✓          |
| Filter Metadata        | ✓       | ✓       | ✓          |
| Create/Manage Searches | ✓       | ✓       | ✓          |
| Save Documents         | ✓       | ✓       | ✓          |
| Index File Contents    | ✓       | ✓       | ✓          |
| Integrate Easily       | ✓       | ✓       | ✓          |

ID | konzept<sup>TM</sup> Feature Matrix

## Contact Us

3505 NW Anderson Hill Rd., Suite 200  
Silverdale, WA 98383

**P:** 360.698.7100

**E:** info@atsid.com

**W:** www.atsid.com